

DUMP STEP
Question & Answer

ACCURATE STUDY
GUIDES, HIGH
PASSING RATE!

Dump Step
provides update
free of charge
in one year!

<http://www.dumpstep.com>

Exam : **642-655**

Title : WAASFE-Wide Area
Application Services for
Field Engineers

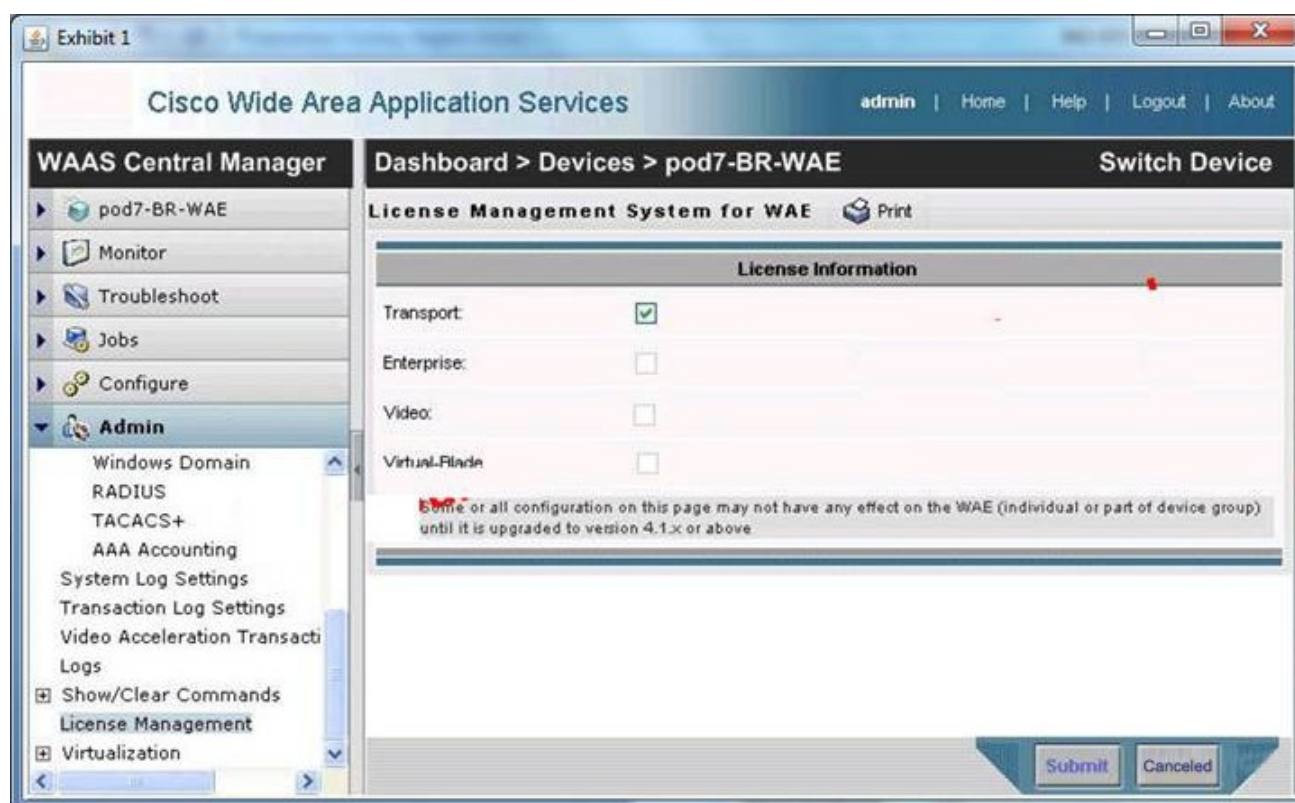
Version : Demo

1.Which setting should be used in the "Boot from" filed in the virtual blade configuration when an operating system is first installed through an CD ISO image onto a virtual blade?

- A. /local1/vbs/win2k8.iso
- B. WAAS /local1/loca/vb folder
- C. Floppy Disk
- D. CD-ROM
- E. hard disk

Answer: D

2.Exhibit:



You work as a network engineer at Your company. You study the exhibit carefully. When troubleshooting video licensing on a WAE, this Central Manager output is displayed.

Which two steps should be taken to enable the video license? (Choose two.)

- A. Restart the WAE
- B. Select the Enterprise Check Box
- C. Select the Video Check Box
- D. Select the Virtual-Blade Check Box

Answer: BC

3.Which command verifies that a WAE in-line card is intercepting traffic from the correct VLANs?

- A. show wccp services
- B. show wccp vlans inline
- C. show int inlinedgroup x/y
- D. show ip access-lists

Answer: C

4. In which two ways will you register and activate a WAE to the Central Manager? (Choose two.)

- A. WAE(Config)#cms enable do active
- B. The auto-activate icon in the Central Manager
- C. WAE(Config)#cms enable
- D. The quickstart setup procedure

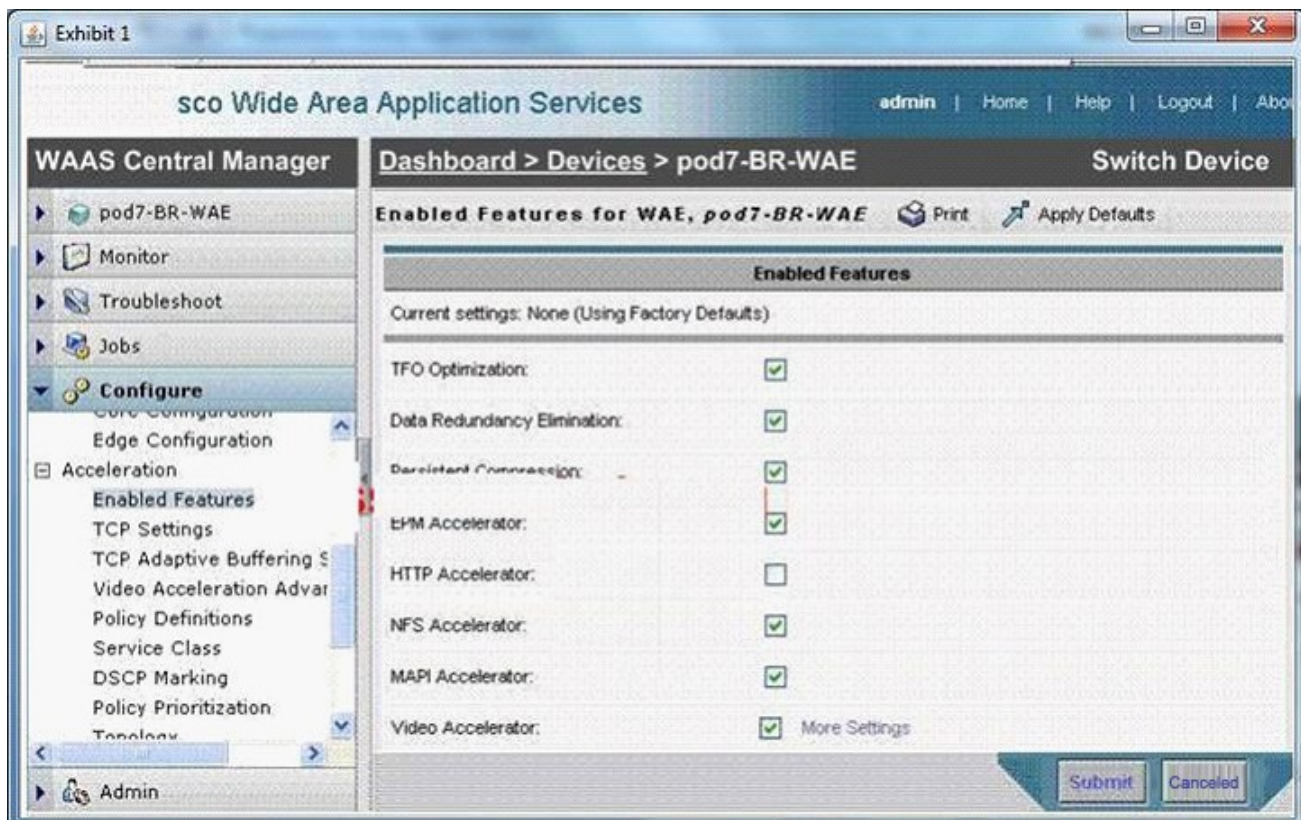
Answer: CD

5. Which three must be configured when you configure an edge print queue? (Choose three.)

- A. WAFS edge service
- B. EPM Policy
- C. Printer Name
- D. device URL

Answer: ACD

6. Exhibit:



You work as a network engineer at Your company. You study the exhibit carefully.

A WAE in your environment is experiencing no HTTP acceleration. What is the problem according to the output from the Central Manager?

- A. HTTP and Video Accelerators cannot be enabled at the same time
- B. The HTTP Accelerator is not enabled
- C. DRE eliminates all need for HTTP acceleration
- D. The Enterprise license is not installed

Answer: B

7.How to verify that the WAE has joined a Microsoft Windows domain correctly?

- A. Click the Show Authentication Status button in Central Manager
- B. Use the Windowsnetstat command
- C. Use the Windowsnbstat command
- D. Execute the show windows-domain command on the WAE

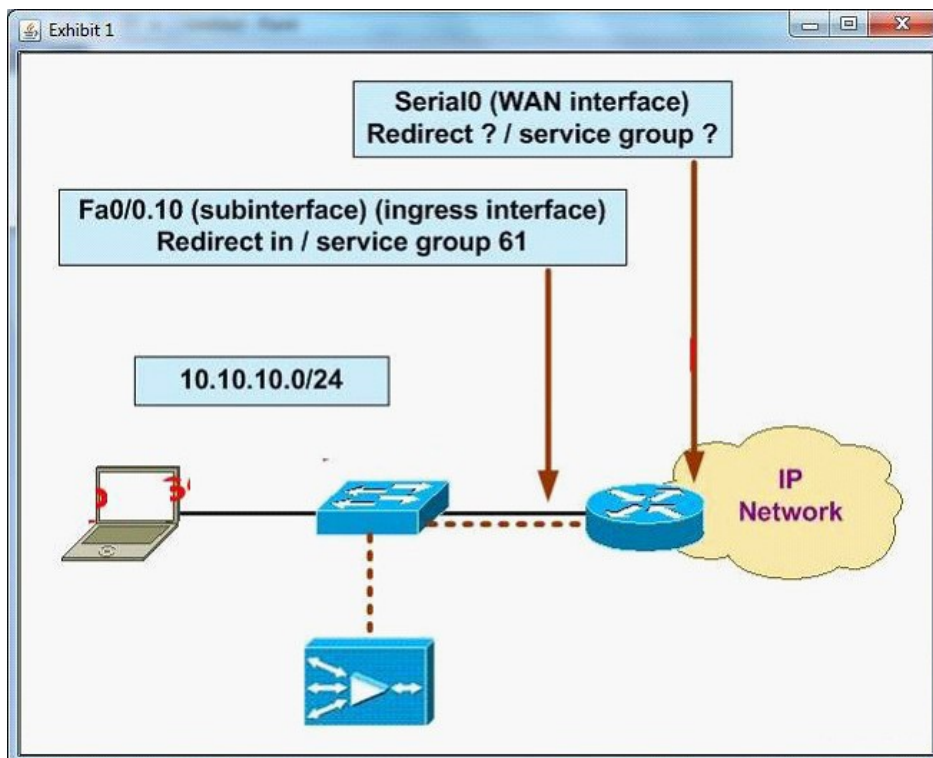
Answer: A

8.Within Windows Server on WAAS, what are the Cisco-supported features? (Choose all that apply)

- A. Active Directory
- B. DNS
- C. Windows Printing
- D. DHCP
- E. Internet Explorer
- F. FTP services
- G. Windows Media Streaming

Answer: ABCD

9.Exhibit:



You work as a network engineer at Your company. You study the exhibit carefully.

The following diagram displays the Cisco WAAS configuration for your customer. Which WCCPv2 interception configuration should be applied to interface Serial0?

- A. Redirect in / service group 62
- B. Redirect out / service group 62

C. Redirect in / service group 61

D. Redirect out/service group 61

Answer: A

10.How many baseline device groups can be configured for the acceleration feature set?

A. Three

B. One

C. As many as needed

D. Two

Answer: B

11.Your customer has recently completed a large expansion of one of their regional offices. They have discovered that the WAE-512-2GB Edge WAE in that office has begun passing through some TCP connections without optimizing those connections. What two actions would solve the problem? (Choose two.)

A. Add more memory to the WAE

B. Add another WAE-512 edge WAE

C. Upgrade to a WAE-612 or WAE-7326

D. Bundle the WAE interfaces into a PortChannel

Answer: BC

12.What important troubleshooting information will you draw for the Video Accelerator from the WAE#show stat accelerator video?

A. Whether or not the WAE(Config)#accelerator video enable command has been issued

B. Troubleshooting of the Video Accelerator can only be done through the Central Manager GUI

C. The total Non-Windows Media and Non-Live Video Streams

D. The license status of the Video Accelerator

Answer: C

13.How to monitor optimization statistics for a given application across multiple WAE devices?

A. Create a separate application traffic policy for each application

B. Create a location group for all WAE devices on which that application is optimized

C. Ensure that each application resides on a different subnet

D. Create a device group for all WAE devices on which that application is optimized

Answer: D

14.Exhibit:

Device Name	Services	IP Address	CMS Status	Device Status
CM1	CM (Primary)	10.10.10.10	Online	Online
CM2	CM (Standby)	10.10.10.11	Online	Online
CORE1	Core	2.2.2.2	Offline	Offline
EDGE-NM	Edge	10.10.100.2	Online	Online
EDGE1	Edge	1.1.1.2	Online	Online

Based on the following exhibit. Which two are the possible reasons the CORE1 WAE might be displayed as "Offline"?

- A. The Central Manager service is disabled
- B. The WAE is powered off
- C. The WAE is configured in the same VLAN as the server nodes
- D. The HTTPS service is disabled

Answer: AB

15. The Cisco WAE Appliances provide a unified platform for hosting Cisco application acceleration and WAN optimization solutions. Your customer complains that traffic has never been received by the remote WAE device after deploying Cisco WAAS by use of WCCPv2 in an off-path configuration. Which two parameters should be verified? (Choose two.)

- A. Routing Configuration
- B. Router IP Address
- C. WCCP Status
- D. Service group redirection

Answer: CD